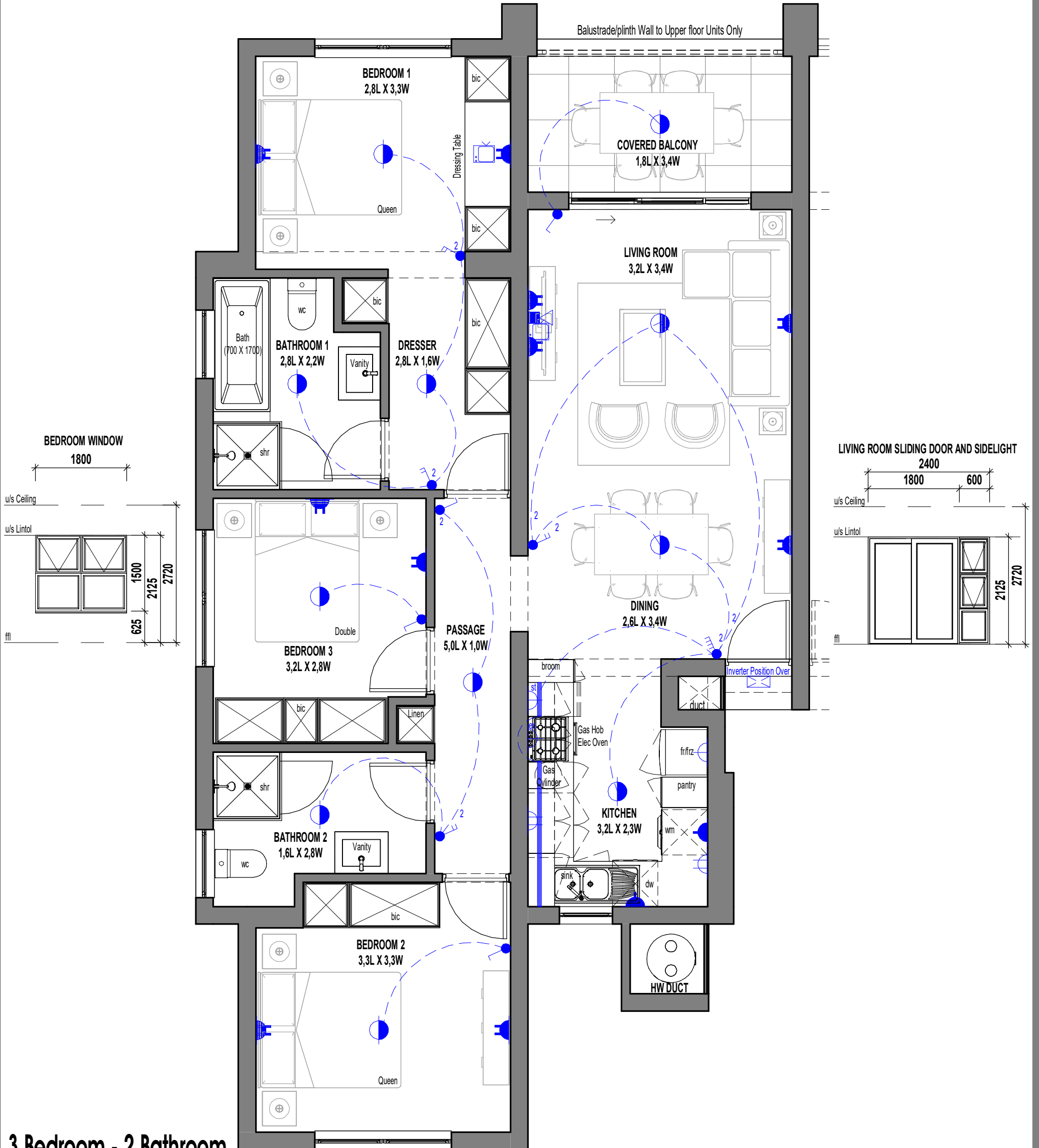
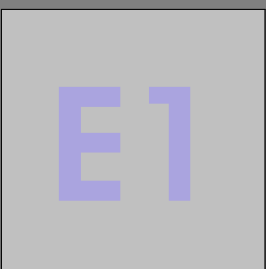


# ANNEXURE C FLOOR PLAN



3 Bedroom - 2 Bathroom

SCALE 1:50



**ELECTRICAL LEGEND**

- Surface Mounted LED Fitting
- External Wall Mounted LED Light Fitting
- LED Strip Light Fitting (u/s - Eye levels - Kitchen)
- Single Light Switch
- Double Light Switch
- Triple Light Switch
- Two-Way Light Switch
- Single Plug Point (300mm Above FFL)
- Double Plug Point (300mm Above FFL)
- Single Plug Point (150mm Above Counter)
- Double Plug Point (150mm Above Counter)
- Stove Isolator (Above Counter)
- Extractor Plug (High Level)
- Distribution Board
- TV Point
- Fibre / Data Point
- Inverter

**AREA  
TYPE E1**

Floor Area	91.70 m <sup>2</sup>
CovPatio/Balcony	7.24 m <sup>2</sup>
Total	98.94 m <sup>2</sup>

\* The areas are approximate and shall vary from the areas reflected on the sectional title plan