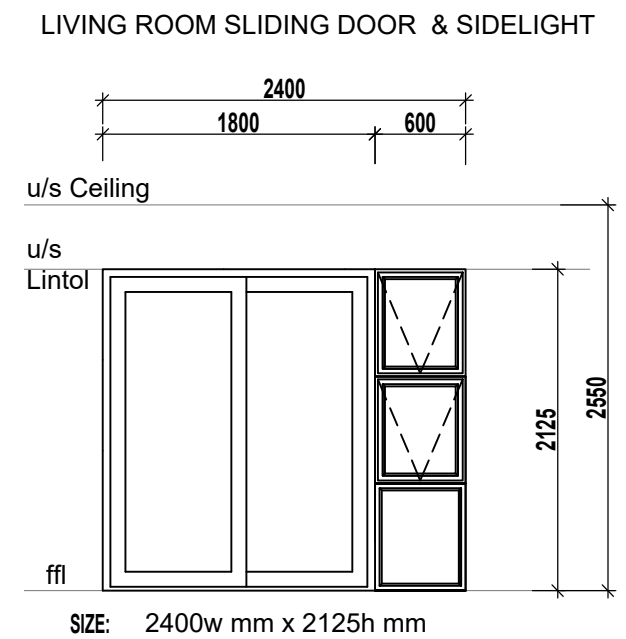
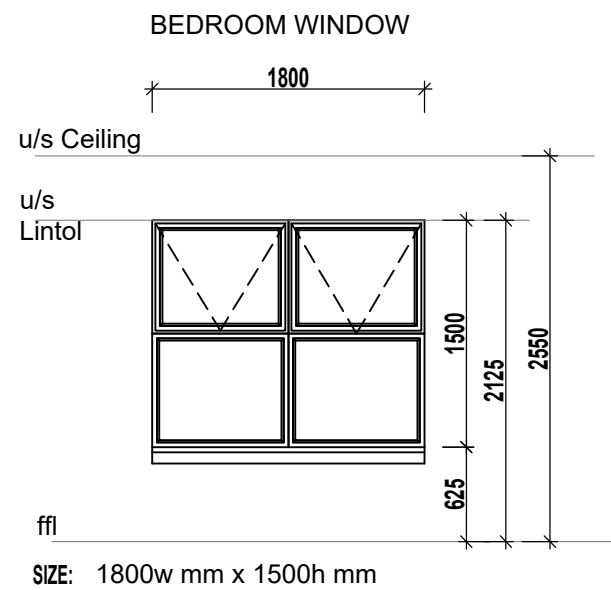
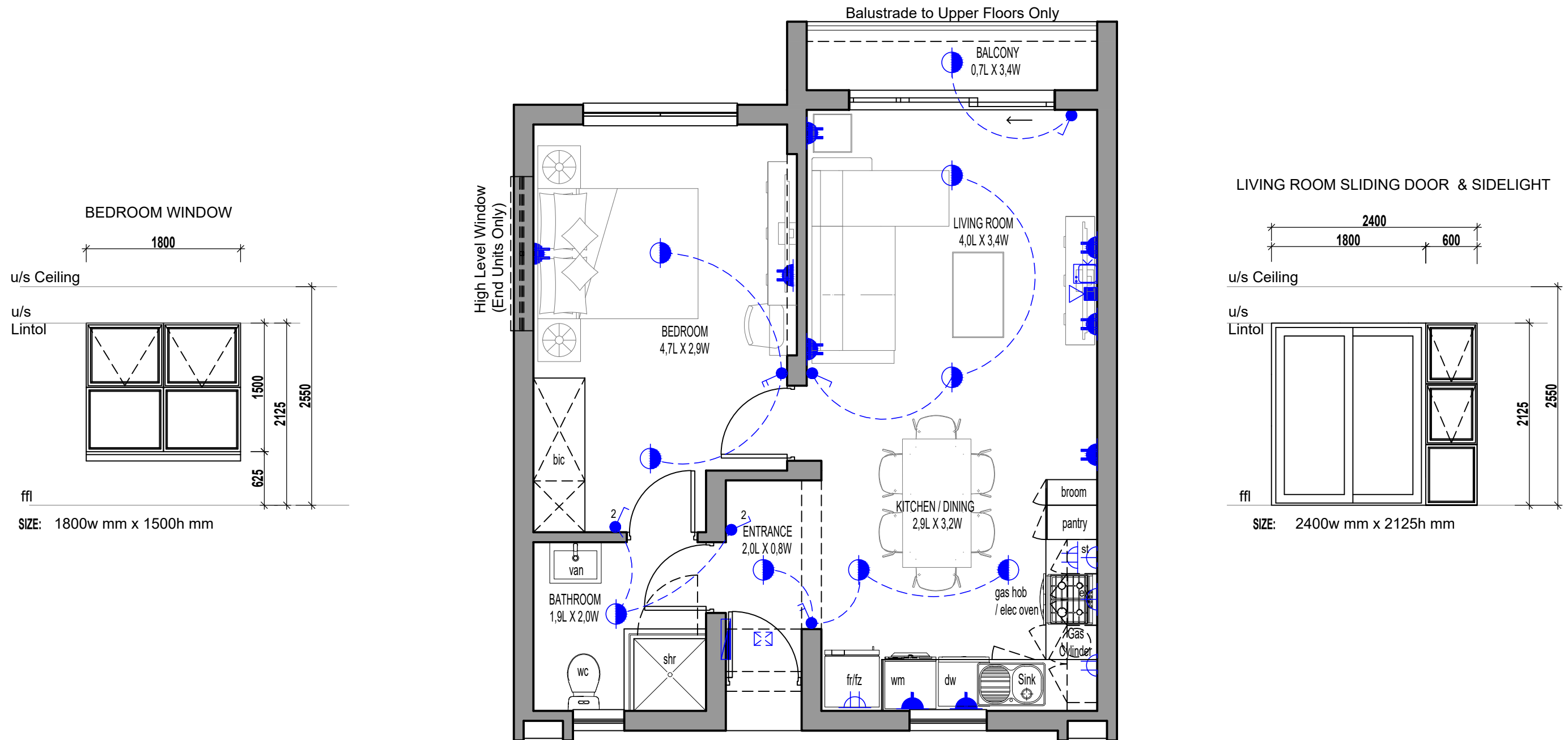


# ANNEXURE C FLOOR PLAN



**1 Bedroom - 1 Bathroom**

SCALE 1:50

**B2**

**ELECTRICAL LEGEND**

- Surface Mounted LED Fitting
- External Wall Mounted LED Light Fitting
- Single Light Switch
- Double Light Switch
- Triple Light Switch
- Two-Way Light Switch
- Single Plug Point (300mm Above FFL)
- Double Plug Point (300mm Above FFL)
- Single Plug Point (150mm Above Counter)
- Double Plug Point (150mm Above Counter)
- Stove Isolator (Above Counter)
- Extractor Plug (High Level)
- Distribution Board
- TV Point
- Fibre / Data Point
- Inverter (Above Entrance Door)

**AREA**

TYPE B2	
Floor Area	51.73 m <sup>2</sup>
Balcony	3.08 m <sup>2</sup>
<b>TOTAL</b>	<b>54.81 m<sup>2</sup></b>

\* The areas are approximate and shall vary from the areas reflected on the sectional title plan